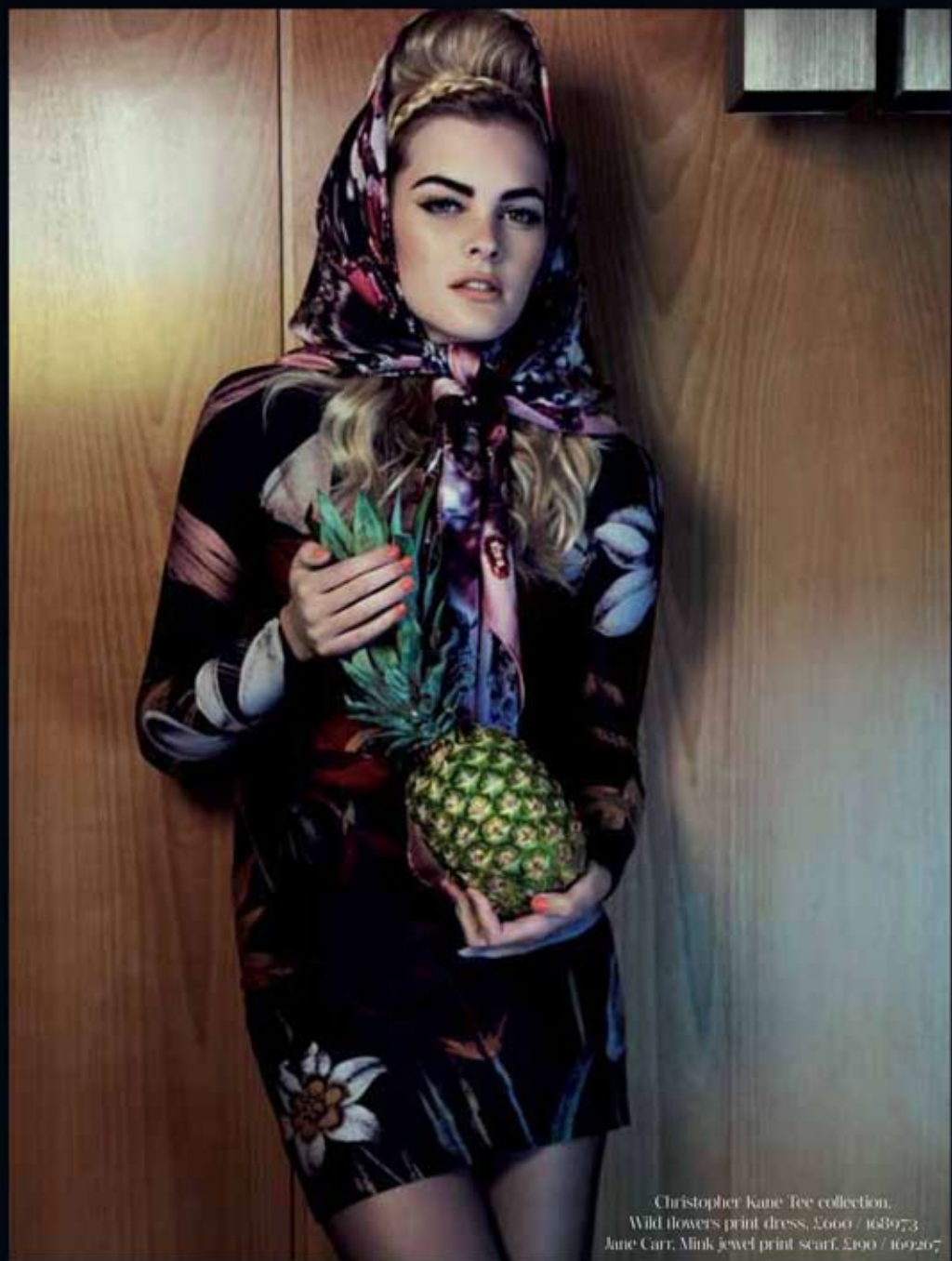


A black and white photograph of a man and a woman walking on a lawn. The man is on the right, wearing a dark suit, a dark shirt, a tie, and a fedora hat. He is looking towards the woman. The woman is on the left, wearing a dark, long-sleeved coat and high heels. She has blonde, wavy hair and is looking towards the man. They are walking towards the right. The background consists of dark foliage and a building. The overall mood is classic and elegant.

CRUISE
WE
TWENTY
TEN



Christopher Kane Tee collection,
Wild flowers print dress, £600 / 463973
Jane Carr: Mink jewel print scarf, £100 / 469267